

### 8200 Mortise Lock Line



#### The Strongest Lock on the Block

When it comes to strength and durability, SARGENT continues to set standards with the 8200 Mortise lock. The 8200 far surpasses ANSI/BHMA A156.13 Series 1000 Grade 1 standards, making it the strongest and most durable mortise lock in the industry. SARGENT Mortise Locks are designed and constructed with high quality components to provide maximum security, performance and durability.

#### Maximum Flexibility

- Aesthetic design. Many escutcheon and lever styles available to match a wide range of styles
- available with push/pull trim, perfect for hospital applications

#### Strength & Security

- Far Exceeds ANSI/BHMA A156.13 Series 1000 Grade 1 and Security Grade 1.
- Exceeds cycle testing requirements by 14 times the ANSI/BHMA A156.13 Grade 1 Standard
- Heavy duty wrought steel hubs and high carbon steel spring cartridge provide superior strength and cycle life
- Latch bolt is stainless steel with 3/4" projection one piece anti-friction reversible latch
- Through-bolted lever trim for increased security
- Torx® and spanner screws
- Security key systems available (Signature, Keso, KesoF1, and XC)

#### Certification Compliance

- ANSI/BHMA certified
- Meets A117.1 Accessibility Code
- UL and UL listed to Canadian safety standards

**Note:**

Any retrofit or other field modification to a fire rated opening can potentially impact the fire rating of the opening, and Sargent Manufacturing Company makes no representations or warranties concerning what such impact may be in any specific situation. When retrofitting any portion of an existing fire rated opening, or specifying and installing a new fire-rated opening, please consult with a code specialist or local code official (Authority Having Jurisdiction) to ensure compliance with all applicable codes and ratings.

- Meets positive pressure requirements UL 10C and UBC 7-2 (1997)
- California State Reference Code

#### Multi-Functionality

- Complete line of lock bodies offering 58 functions, 4 electrical functions
- 8 functions accomplished with one lock body
- Functions easily changed without opening the lock case
- Versatile. Offered for door thickness ranging from 1-3/5" (35mm) to 6" (152mm)

#### Easy to Install

- Easy operation. Only 30° of lever rotation required to retract latch bolt
- Lever springs contained inside of the lock case
- Pre-assembled components make installation fool-proof Installation time — reduced by up to 40%
- Lock is easily re-handed without removing parts or opening case

### 8200 Mortise Lock Line Components

#### Trim



LE1 Escutcheon



L Lever

#### Finishes

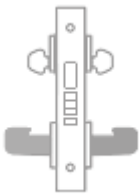


**32D:** Satin  
Stainless Steel  
(BHMA 630)

#### Options

- 31:** Special Thickness Doors (specify door thickness)
- 36:** 6 lobe security head screws

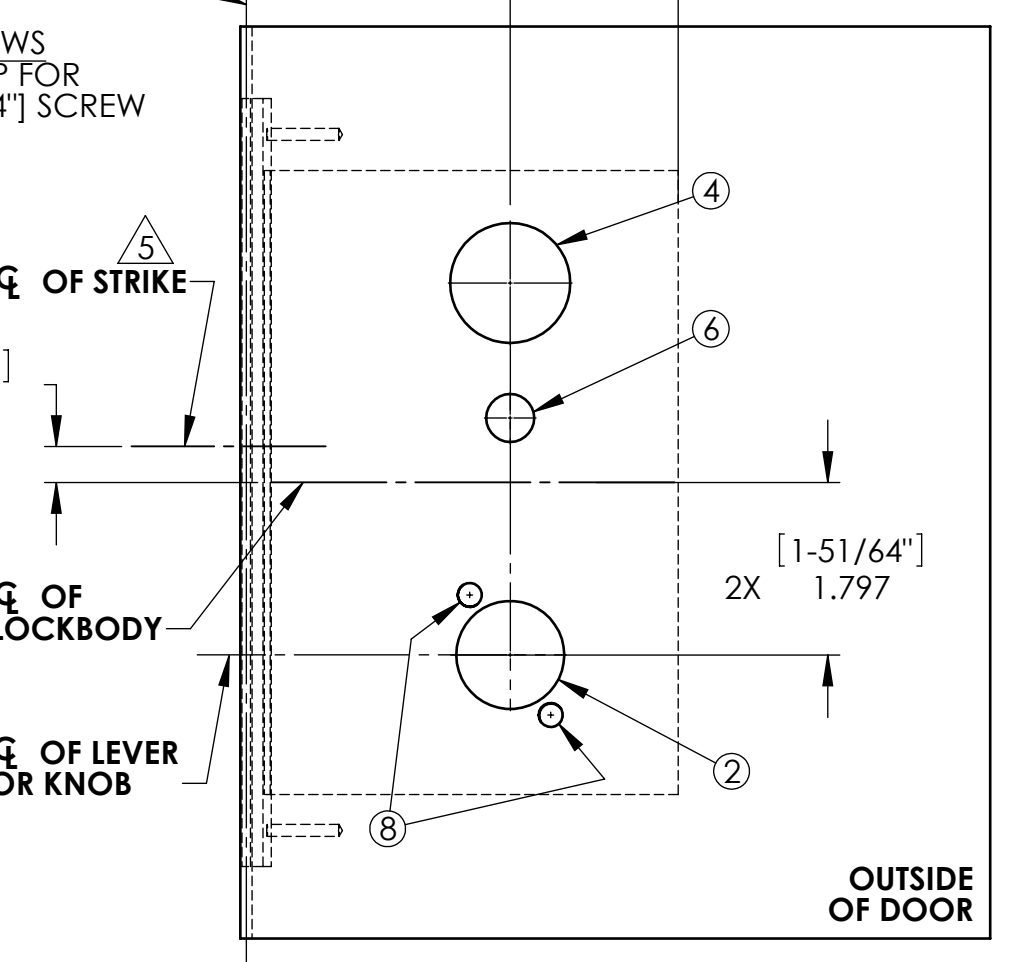
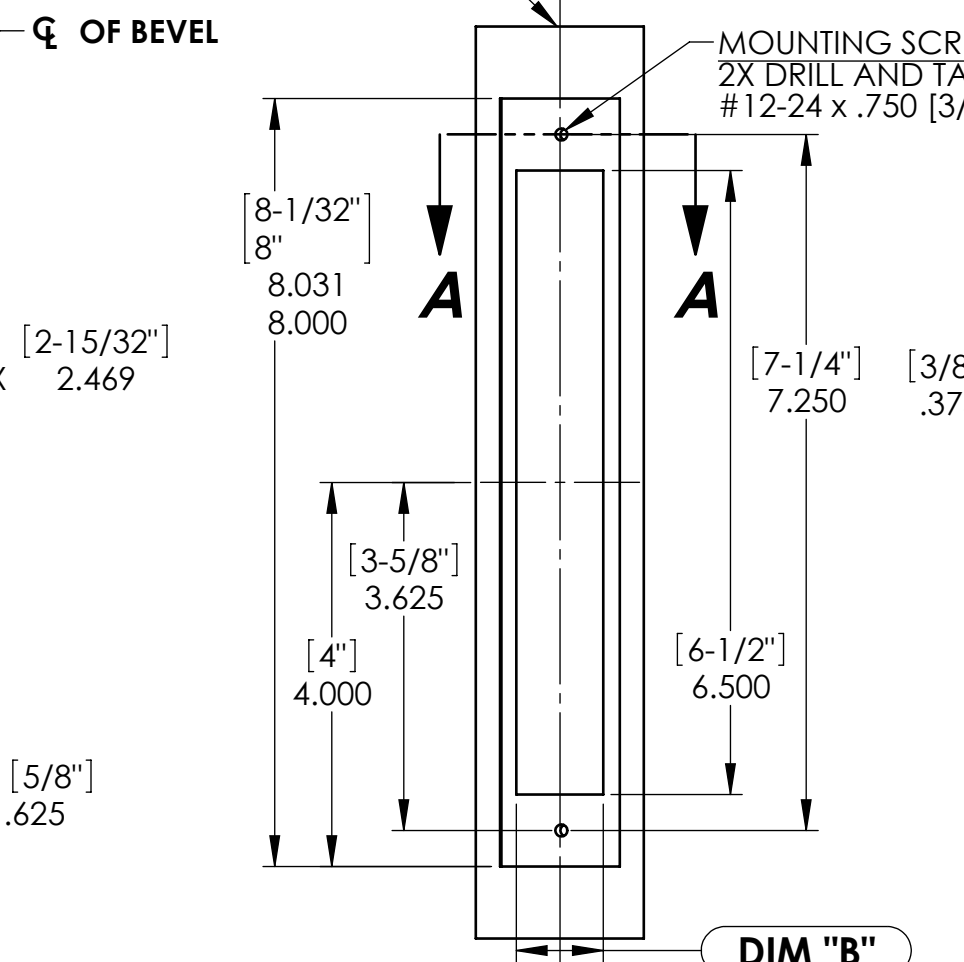
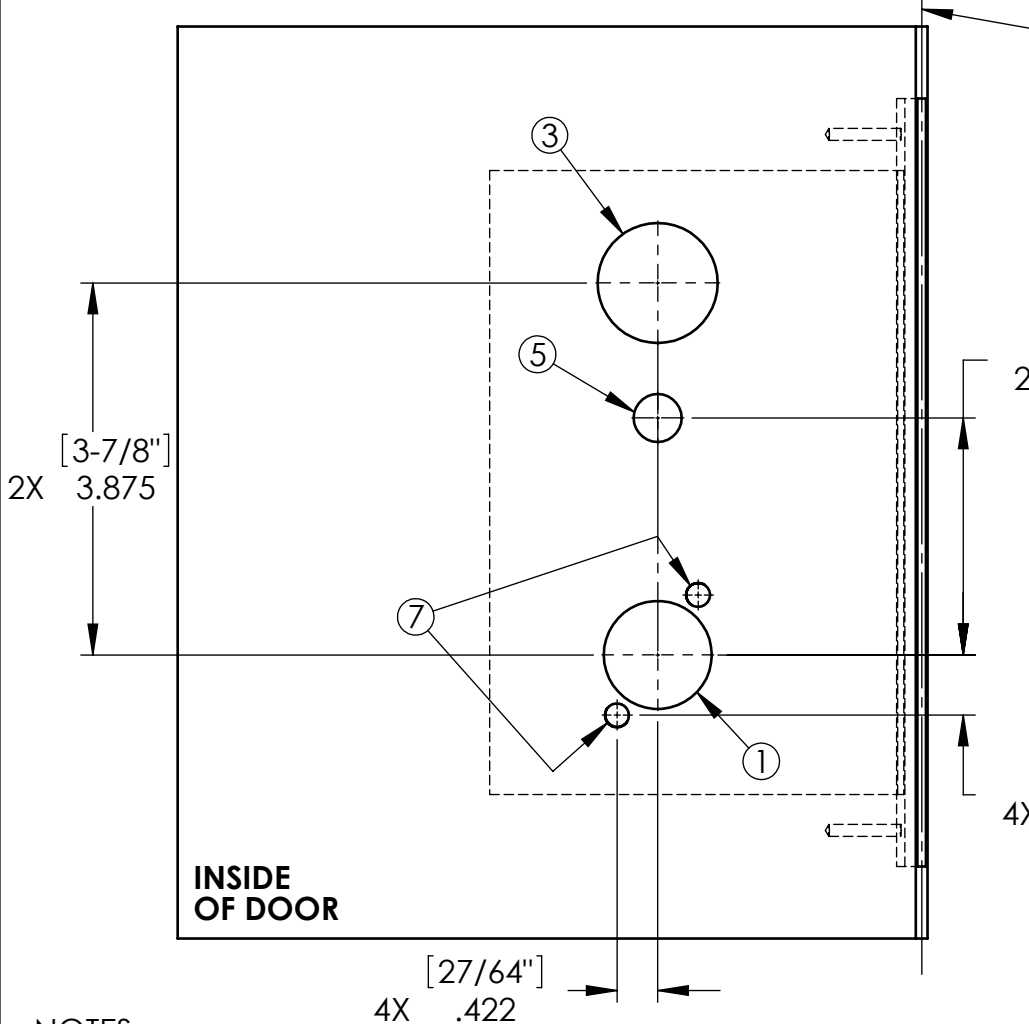
#### Functions



**52:**Institution  
Deadbolt

REQUIRED HOLES								
FUNCTION	1	2	3	4	5	6	7	8
	1.125" [1-1/8"] DIA.	1.125" [1-1/8"] DIA.	1.250" [1-1/4"] DIA.	1.250" [1-1/4"] DIA.	.500" [1/2"] DIA.	.500" [1/2"] DIA.	.250" [1/4"] DIA.	.250" [1/4"] DIA.
03, 21				■	■			
04, 27, 30, 37, 55, 70, 71, 89	■	■		■			■	■
06, 91	■			■			■	
05*, 24, 25, 28, 43, 45, 47, 50, 51, 56, 67, 281	■	■		■	■		■	■
13, 95	■						■	
15, 96, 97	■	■					■	■
16, 17, 26, 29, 38, 39, 40, 41, 46, 48, 49, 52, 59, 72, 73, 90	■	■	■	■			■	■
20				■				
22			■	■				
23			■	■	■			
31, 35, 36		■		■				■
65, 66, 68	■	■			■	■	■	■
92	■		■	■			▲	

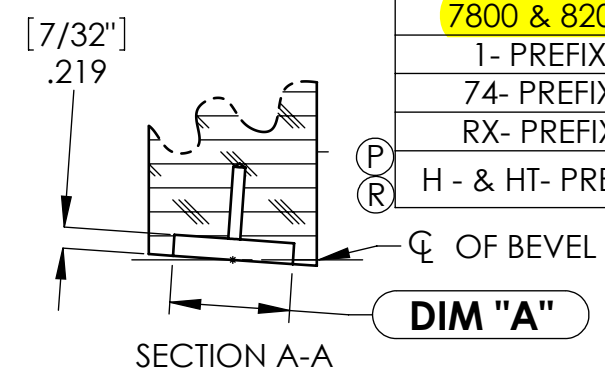
\* ALL 05 LOCKS MANUFACTURED PRIOR TO 7/6/04 USE 55 FUNCTION DOOR PREP.



- NOTES:
- 1. ■ DENOTES HOLE REQUIRED FOR FUNCTION LISTED. (CHECK TABLE BEFORE CUTTING HOLE.)
  - 2. ▲ DENOTES HOLE #7 NOT REQUIRED FOR 7892 LOCKSET.
  - 3. REFER TO TRIM TEMPLATE FOR ADDITIONAL HOLE REQUIREMENTS.
  - 4. SUITABLE REINFORCEMENTS REQUIRED FOR METAL DOORS.
  - 5. FOR DETAILS, SEE STRIKE TEMPLATE 7063.
  - 6. FOR ADDITIONAL DETAIL FOR SOLENOID OPERATED FUNCTIONS (70, 71, 72, & 73), SEE TEMPLATE 7065.

THIS TEMPLATE COVERS THE 7800 & 8200 SERIES LOCKSET IN ACCORDANCE WITH THE SPECIFICATIONS INDICATED BELOW:

LOCK LINES & VARIATIONS	VARIABLE DIMENSIONS		
	DIM "A"	DIM "B"	DIM "C"
7800 & 8200	1.250±.015 [1-1/4"]	.906 [29/32"]	4.125 [4-1/8"]
1- PREFIX	1.062±.015 [1-1/16"]	.906 [29/32"]	4.125 [4-1/8"]
74- PREFIX	1.250±.015 [1-1/4"]	1.125 [1-1/8"]	4.250 [4-1/4"]
RX- PREFIX	1.250±.015 [1-1/4"]	1.250 [1-1/4"]	4.375 [4-3/8"]
H - & HT- PREFIX	1.250±.015 (1-1/4")	1.125 +0/- .062 [1-1/8"]	4.375 (4-3/8")



**SARGENT**  
ASSA ABLOY

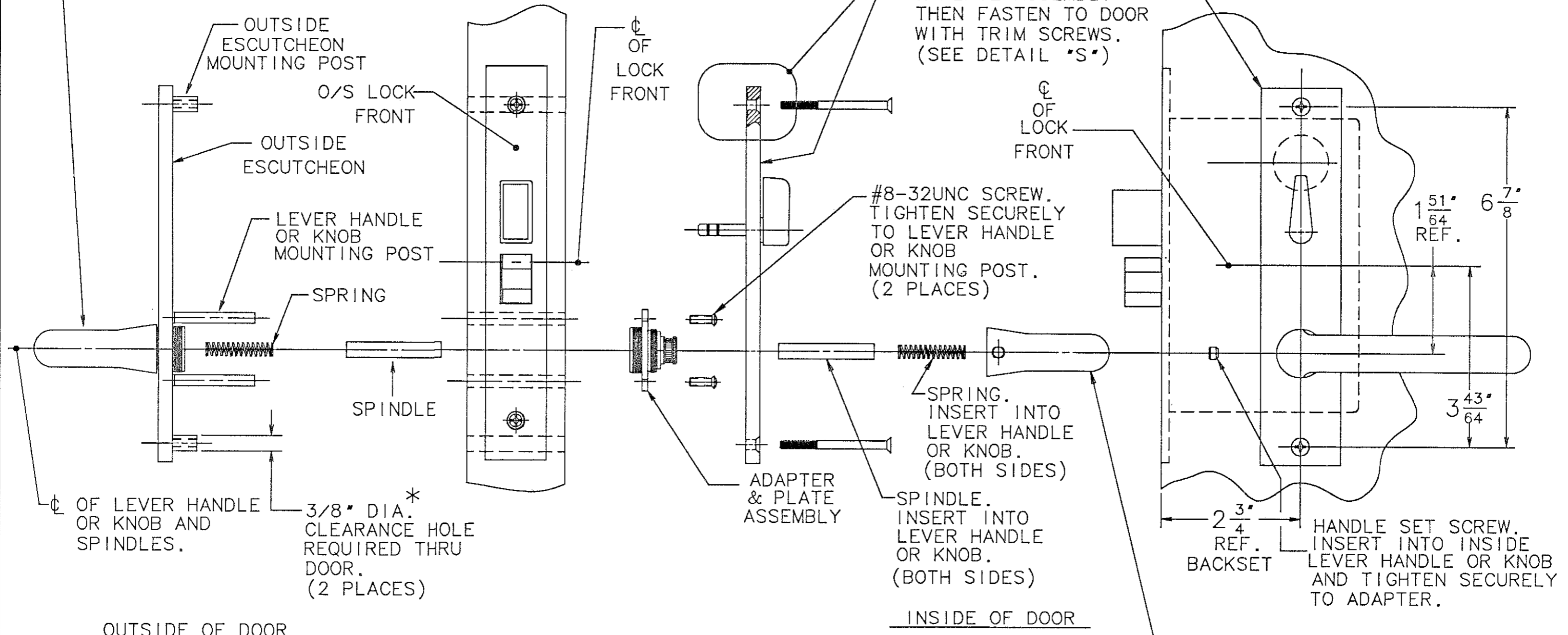
SARGENT Manufacturing Company  
100 Sargent Drive New Haven, CT 06511

RELEASE DATE  
**23-MAY-11**

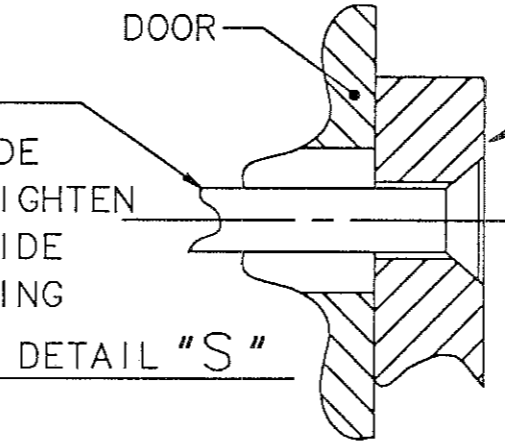
TEMPLATE NO.  
7057 R

TEMPLATE: MORTISE LOCK FOR 7800 AND 8200 SERIES (LOCKBODIES ONLY)

OUTSIDE LEVER HANDLE OR KNOB. INSERT MOUNTING POSTS THROUGH DOOR AND LOCK BODY ASSEMBLY THEN SECURE TO ADAPTER & PLATE ASSEMBLY USING (2) #8-32 SCREWS.



EXPOSED SCREWS TRIM SCREW. INSERT INTO INSIDE ESCUTCHEON AND TIGHTEN SECURELY TO OUTSIDE ESCUTCHEON MOUNTING POST. (2 PLACES)



- ③ FOR 9200, USED IN CONJUNCTION WITH TEMPLATE #4482 (LOCKBODY).
- ② \* IMPORTANT: FOR TRIM ONE SIDE FUNCTIONS, INSIDE ESCUTCHEONS IS SURFACE APPLIED WITH (2) #8-32 COMB. SCREWS. (DO NOT APPLY TO 9200).
- ① FOR 7800/8200, USED IN CONJUNCTION WITH TEMPLATE #7057 (LOCKBODY).

SARGENT & COMPANY		NEW HAVEN, CONN. 06511	
TEMPLATE: 7800, 8200 & 9200 MORTISE LOCK LE1, LE3, LW1, CE AND TE ESCUTCHEONS KE1, KE3 & KW1 (EXPOSED SCREWS)		RELEASE DATE	25-FEB-00
		TEMPLT NO.	7052 E

# 7800/8200 Series Mortise Locks

## Multi-function Lockbody

### Options 04, 05, 06, 13, 31, 36, 37, 38

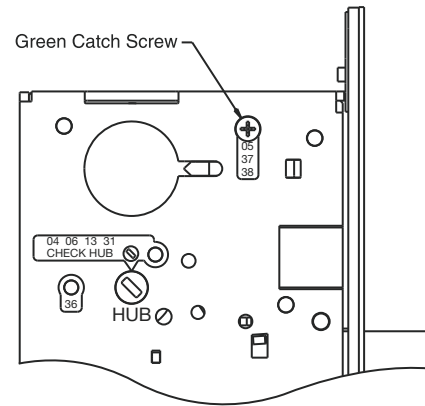
#### How to Change Function of Lock:

One green catch screw must be located in following three (3) locations as designated on lock case to create desired function:

- 05, 37 and 38 functions
- 04, 06, 13 and 31 functions
- 36 functions

**Note**  
When moving green catch screw to 04, 06, 13 and 31 functions, hub position must be at 45° as shown on lockcase.

\*See How to Change Hand of Lock, page 6



#### Items needed to create following functions:

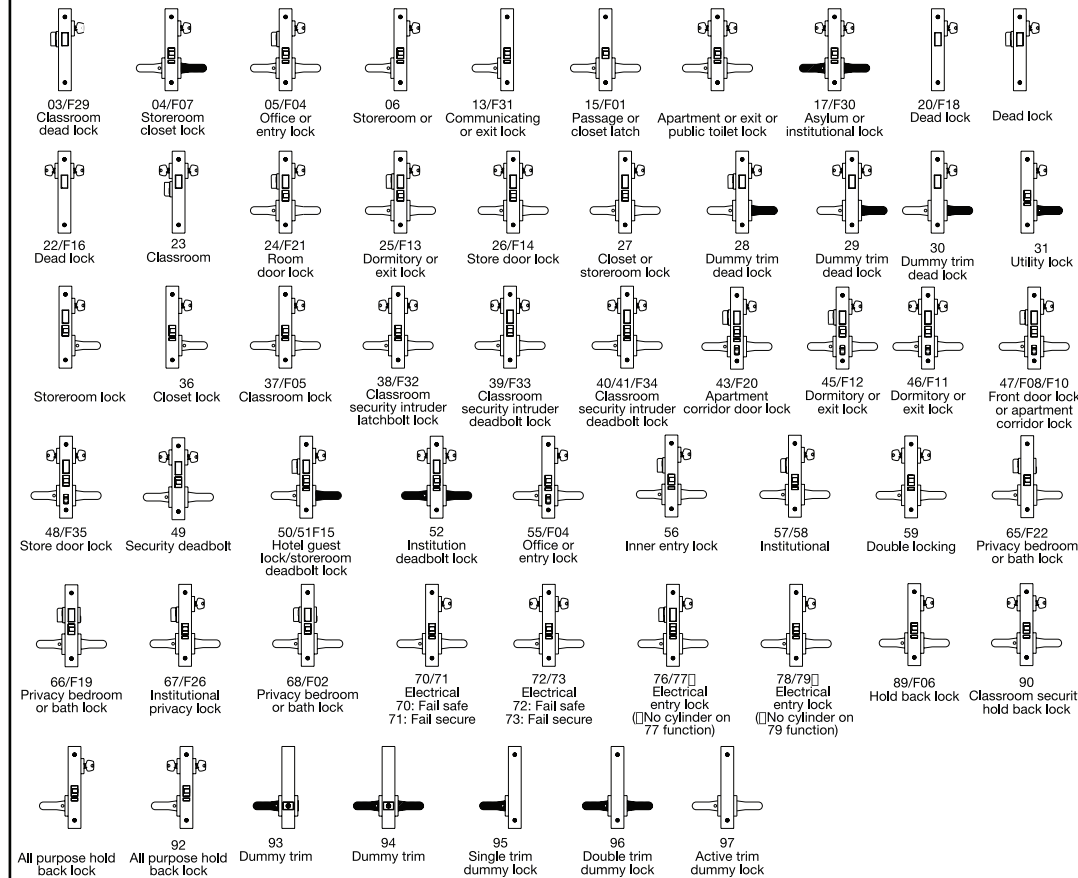
Function	Outside Lever	Inside Lever	Trim One Side Kit	Outside Cylinder	Inside Cylinder	Thumb Turn
04	X	X	—	X	—	—
05	X	X	—	X	—	X***
06	—	X	X	X	—	—
13	—	X	X	—	—	—
31	—	X	X	X	—	—
36	—	X	X	X	—	—
37	X	X	—	X	—	—
38	X	X	—	X	X	—

\*\*\* 130 KB thumb turn is used with rose trim only, escutcheon trims requiring thumb turns, must be preassembled at factory.

#41 Cylinder is standard for both single and double cylinder functions for 1-3/4" thick door.

**Note**  
Trim-one-side functions always require an inside trim assembly which can be used inside or outside of door (to order Trim-one-side kit (for all trim except PT or FE) order part #82-4611.

## SARGENT 8200 Series Mortise Locks Function List

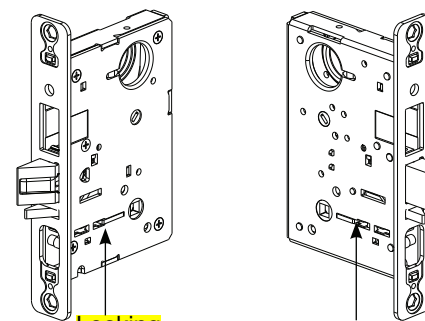


**Note**  
Shaded levers are rigid at all times.  
05 Function has thumb turn inside of door and 55 Function has toggle on lock front.

### How To Change Hand of Lock

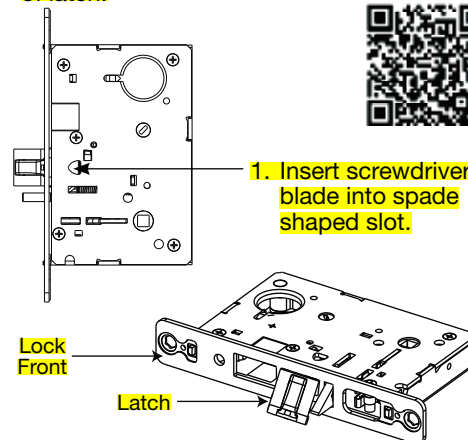
- Red surface of locking piece must face locked side of door.
  - Position lockbody with red surface of locking piece visible.
  - Insert blade type screwdriver into locking piece slot to rotate locking piece.
  - Push locking piece toward back of lockbody and rotate 180° until red surface shows on opposite side.

- Note**  
For 04, 06, 13, 17 and 31 functions:
- Remove green catch screw.
  - Rotate hub to 45° position.
  - Rotate locking piece for required hand.
  - Face red surface to locked side of door.
  - Rotate hub to original 45° position (as shown on lockcase).
  - Reinstall green catch screw.



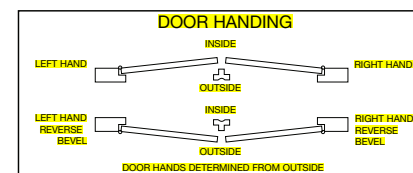
Locking Piece Slot  
Red color indicates locked side of door or hold back side (91 and 92 functions)

- Beveled surface of latch must face strike. Deadlatch is self adjusting. To change hand of latch:
  - Insert screwdriver blade into spade shaped slot.



- Rotate screwdriver 90° to push latch out until back of latch clears lock front. Rotate latch 180°. Latch will re-enter lockbody.

**Note**  
Latch can not be unscrewed.



## Installation Instructions

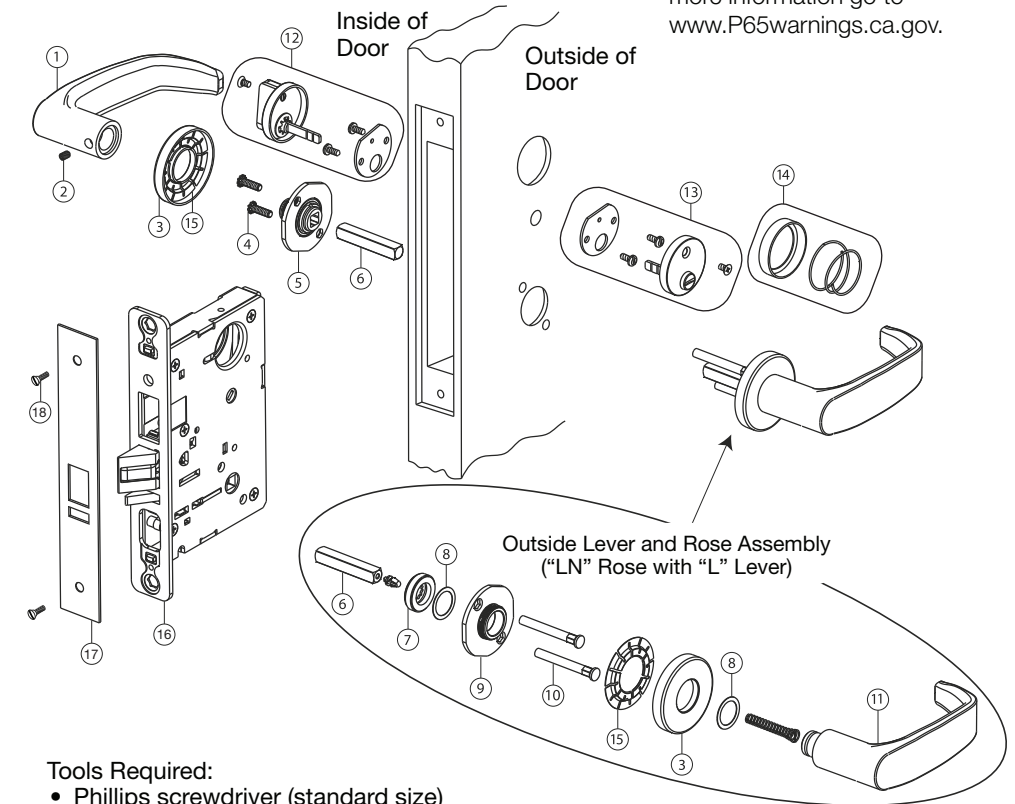
### 7800 Series Knobs/8200 Series Lever Mortise Locks

#### Standard 7800/8200 Series Mortise Locks Sectional Trim Description and Part Number

To view QR Code video clips within this document, download a free mobile app and scan QR Code with your mobile device.

### WARNING

This product can expose you to lead which is known to the state of California to cause cancer and birth defects or other reproductive harm. For more information go to [www.P65warnings.ca.gov](http://www.P65warnings.ca.gov).



- Tools Required:
- Phillips screwdriver (standard size)
  - 1/8" Allen wrench
  - Phillips and flat tip screwdriver
- Installation for levers and knobs is identical

	Part No.	Description	Req.
1	Varies	Inside lever handle – consult factory	1
2	----	Handle set screw 1/4-28 UNF	1
3	81-0093	Rose – “LN” design	2
4	01-1495	Machine screw #8-32 x 5/8"	2
5	82-3088	Inside adapter and plate assembly	1
6	82-0368	Spindle	2
7	82-0184	Cap nut	1
8	01-0079	Washer	2
9	82-3082	Adapter and plate assembly (LN design)	1
10	81-0723	Mounting post	2
11	----	Outside lever handle – consult factory	1
12	77-3279	Turn lever assembly – 130KB design	1
13	77-2595	Emergency button assembly – 184KB	1
14	77-0509	KB cylinder rosette (for 8200)	—
15	82-0612	Non-loosening wave spring	2
16	Varies	Lockbody	1
17	Varies	Outside front	1
18	01-102	Machine Screw #8-32 x 1/4"	2

**Installation Instructions for 7800/8200 Series Mortise Locks (Except PT Trim and FE Trim)**

See trim section to identify specific lock.

1. Important – check template 7057 to prep door for function holes, size and location. Verify strike location according to template. Clean door pocket and verify hand of lock.

2. Slide lock in door.

3. Slide outside lever and rose assembly (or lever and escutcheon assembly) through door and lockbody.

**Note**

- Keep door open while installing lock.
- If installing trim one side, see separate instruction sheet.

4. Slide cylinder (A) through spring (B) and collar (C) (or escutcheon). Thread into lock until cylinder face is flush with collar (C) (or escutcheon) edge. Key slightly pulled out of cylinder will help thread cylinder.

**Note**  
SARGENT logo must be horizontal and on top portion of cylinder.

5. Tighten cylinder clamp screw by hand with #2 Phillips screwdriver.

6. Secure lock in door with two (2) wood screws #12 x 1-1/4" or machine screws #12-24 x 1/2" (D).

7. Slide spindle (E) into lockbody hub.

8. Slide adapter and plate assembly (F) over spindle and secure with two (2) #8-32 screws (G).

**Note**  
R/C and I/C cylinder cores require control key (stamped "C") to install. Must request separately. 1-bitted cylinders utilize a control key bitted 113511.

9. Screw rose (J) firmly onto adapter and plate assembly (F) (or attach escutcheon).

10. Attach inside lever and secure with 1/8" Allen wrench. Verify lock is operating correctly prior to closing door.

11. Assemble thumbturn/emergency release according to instructions on bag.

12. Check for proper operation.

13. Attach outside front (H) with two (2) #8-32 x 1/4" flat head screws (I).

**Note**  
Check for proper lock operation by function number (ex.: 8205=05 function). See 7800/8200 Series catalog ([www.sargentlock.com](http://www.sargentlock.com)).

**TE, CE, LE1, KE1, LE3, KE3, LW1 and KW1 Escutcheon Installation**

**Optional Indicator Insert Installation:**

1. Mount outside escutcheon and inside mounting plate per standard instructions.
2. If applicable, mount indicator insert on inside or outside of door by inserting spindle into mortise hub and continue with standard installation of inside escutcheon.

**Notes**

- Optional indicator insert available for LE1/KE1 only.
- LE3 and KE3 are designed for concealed cylinders; concealed cylinders are installed prior to attaching escutcheons.

Cylinder Collar(s) – required for functions with two (2) cylinders and cylinders longer than #41 (1-1/8")

\* Optional indicator insert mounts either inside or outside of door.

Through-bolt inside escutcheon to outside escutcheon with two (2) #8-32 x 1-7/8" screws (I).

**Note**  
Make sure screw heads are visible on inside escutcheon.

Rotated View of above graphic

Optional Indicator Escutcheon

Optional Indicator Insert \*

**LE2, LE4, KE2 and KE4 Escutcheon Installation**

**Note**

LE4 and KE4 are designed for concealed cylinders; concealed cylinders are installed prior to attaching escutcheons.

Cylinder Collar(s) – required for functions with two (2) cylinders and cylinders longer than #41 (1-1/8")

Through-bolt outside escutcheons with (K) and (L) prior to attaching inside escutcheon. Position inside escutcheon over (L) and secure with two (2) set screws (J) using .050" Allen wrench.

**WT Escutcheon Installation**

Cylinder Collar(s) – required for functions with two (2) cylinders and cylinders longer than #41 (1-1/8")

Inside and outside escutcheons are surface applied using eight (8) #6 x 3/4" wood screws or eight (8) #6-32 x 3/4" machine screws (M).

**LS and KS Security Escutcheon**

Install cylinder under escutcheon. Once escutcheon is installed, back cylinder out toward escutcheon as far as possible. When positioned correctly, secure cylinder in lockbody.

Through-bolt inside escutcheon to outside escutcheon with four (4) 1/4-20 x 1-3/8" screws (N).

**Note**  
Screw heads visible on inside escutcheon.

**Note**

To install double cylinder functions using supplied cylinder retaining cap:

1. Install:
  - both cylinders,
  - cylinder retaining cap (over each cylinder) and
  - escutcheons.
2. Back cylinders out and secure in place.