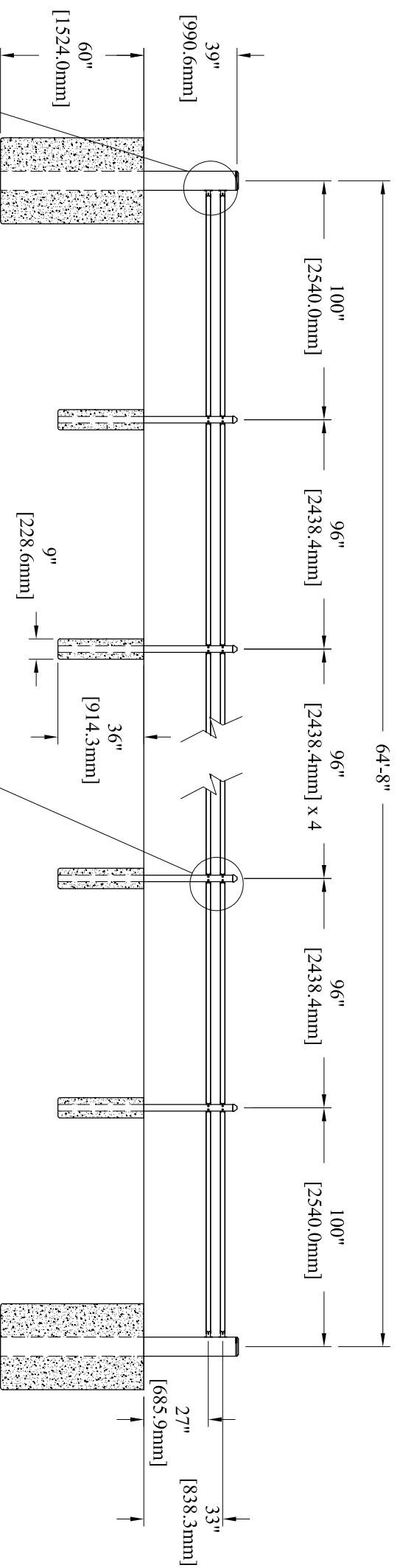
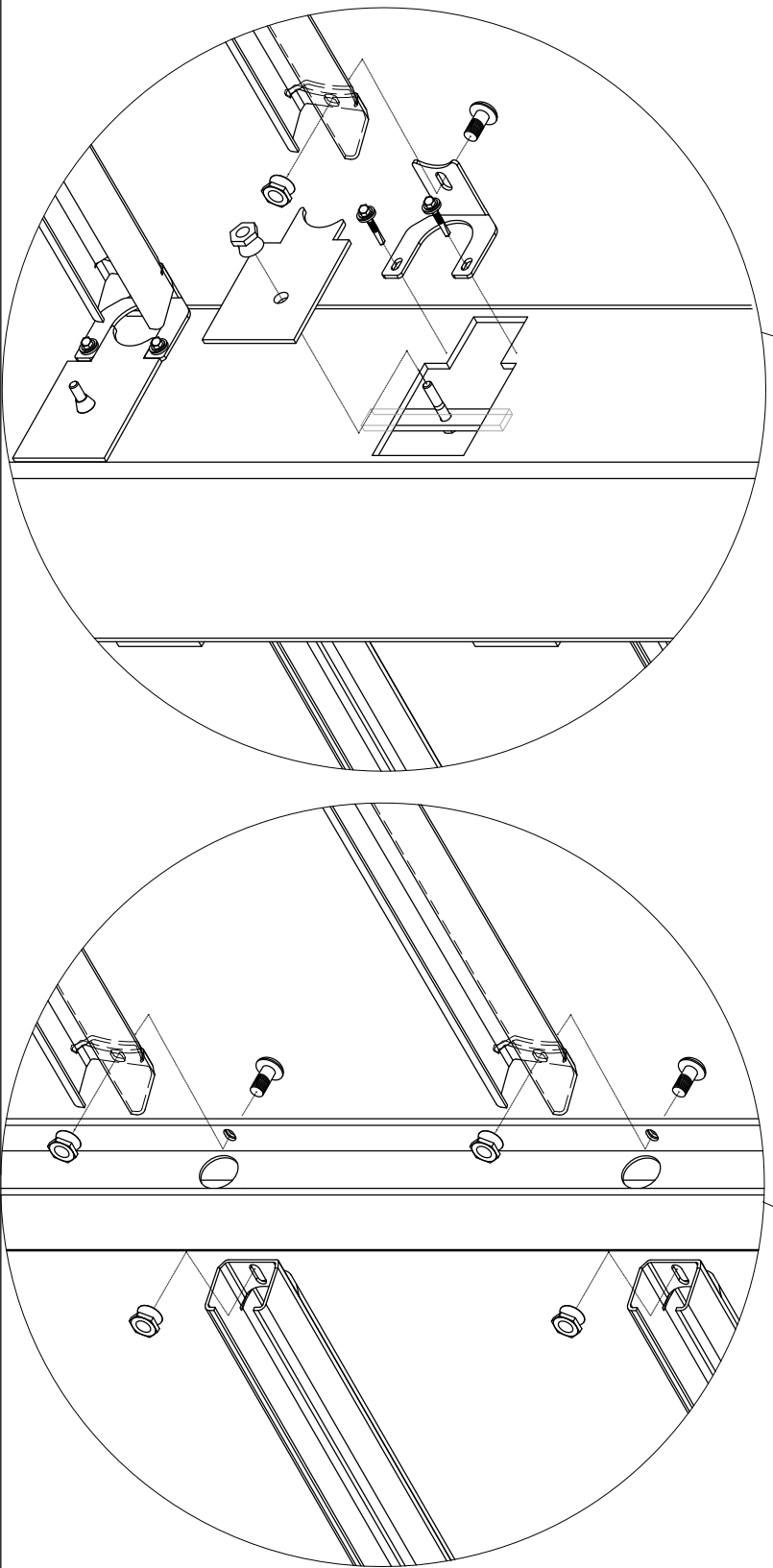


CABLE RUN ELEVATION

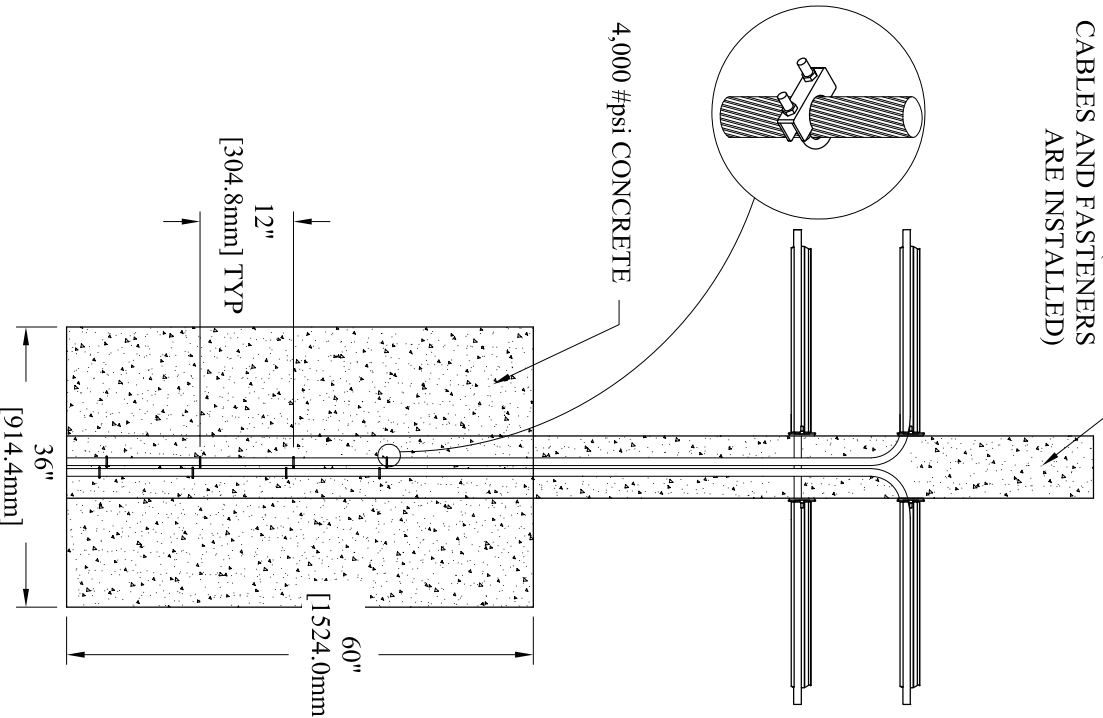


POST SPACING ELEVATION



FILL WITH 4,000 #psi CONCRETE (AFTER CABLES AND FASTENERS ARE INSTALLED)

4,000 #psi CONCRETE



BOLLARD DETAIL

THE PU60-P2 SYSTEMS HAVE BEEN ENGINEERED TO COMPLY WITH THE IMPACT CONDITIONS AND PENETRATION DISTANCES SPECIFIED IN THE ASTM F2656 CLASSIFICATIONS.

Unless Noted Otherwise

xxx	Decimal	: 1/160	DO NOT SCALE	PROPRIETARY INFORMATION
xxx	Decimal	: 1/320	OFF DRAWING	This drawing is the proprietary property of AMERISTAR. Titles, OK and must not be duplicated or used in whole or in part for the making of drawings, parts or plans to the extent that they describe the design, the design or the design of the design.
xxx	Decimal	: 1/100	Angular	: 0.5°

REVISION HISTORY		DESCRIPTION
REV	ECN	AUTHOR
C		KMC

DATE:	05/05/2015	ADDED MM, PUT ON NEW PAGE LAYOUT
DRN BY:	KMC	
DRAWING NO.:	SPR-PR02WR	
TITLE:	STALWART PU60 P2 POST AND RAIL	
DATE:	05/05/2015	SHEET: 1 of 1
DRN BY:	KMC	REV: C

AMERISTAR®  
1555 N. Mingo  
Tulsa, OK 74116  
1-888-933-9422  
www.ameristarinc.com