

PROPRIETARY INFORMATION
This drawing is the property of Ameristar. It is not to be reproduced, copied, or distributed in any form without the written consent of Ameristar. The user agrees to keep this information confidential.

REV.	DATE	DESCRIPTION

DESCRIPTION	RU	CHK BY	DATE
M550 ELECTRIC OPERABLE ARCHITECTURAL DETAILS 10FT - 12FT GENERAL LAYOUT - LH			04/05/2021

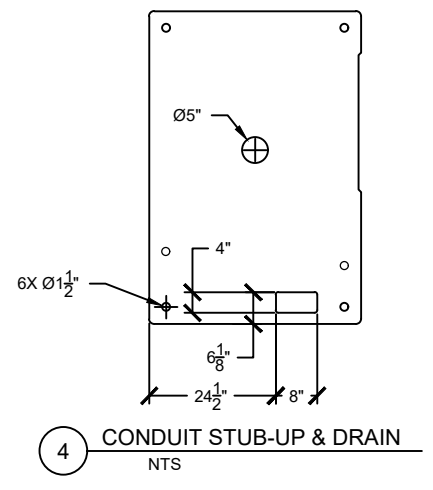
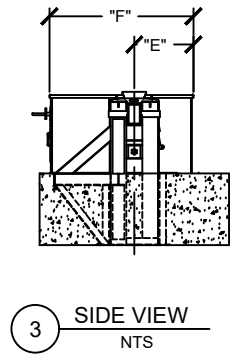
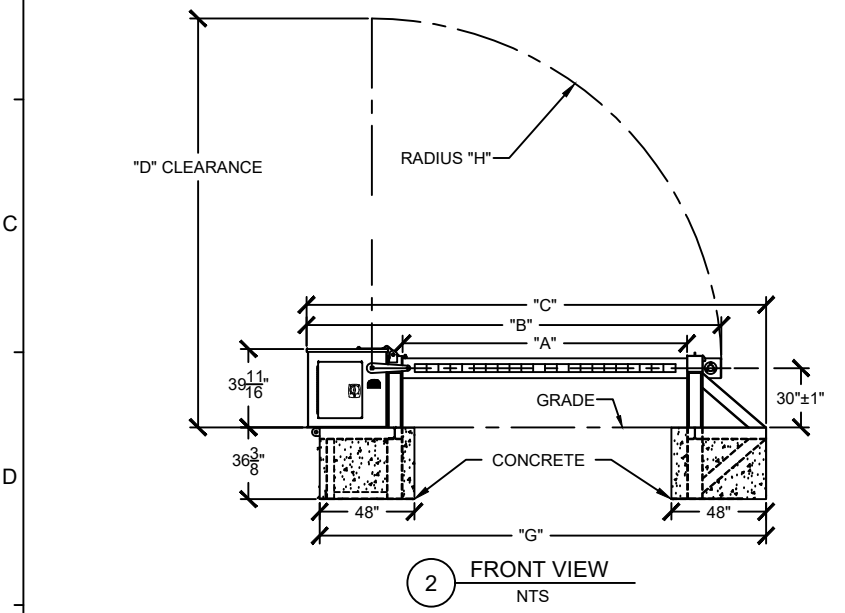
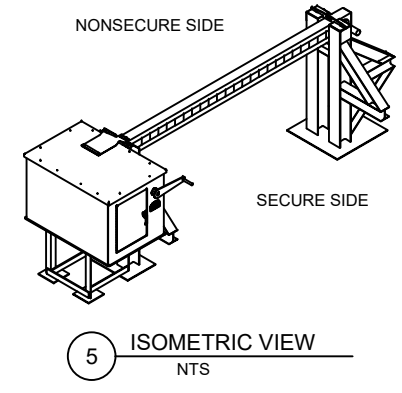
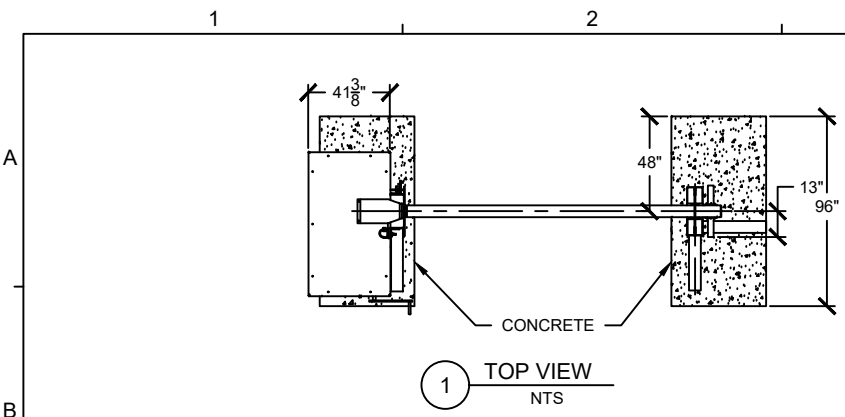
PROJECT NO.	DRAWN BY	SCALE	SHEET
			1

GENERAL NOTES:

- A. THE M550 IS INSTALLED WITH 1/4 INCH CLEARANCE UNDER THE HOUSING ASSEMBLY FOR DRAINAGE DURING RAINY CONDITIONS. IF APPROPRIATE, A DRAINAGE SYSTEM MAY BE USED TO CARRY AWAY RUNOFF IN FLOOD PRONE AREAS. THE BASE OF THE HOUSING ASSEMBLY HAS SEVEN HOLES, ONE IN THE CENTER AND SIX NEAR THE CORNERS. IF DRAIN PIPING IS UTILIZED IT IS RECOMMENDED TO PIPE ALL FIVE HOLES. HOWEVER, IF A SINGLE DRAIN PIPE IS TO BE USED UTILIZING A LEVEL, SELECT WHICH CORNER HOLE IS TO BE USED AS THE DRAIN. FOAM CAN BE APPLIED TO THE DRAIN HOLE DURING THE FOUNDATION PREPARATION PRIOR TO THE CONCRETE FORMING. FOAM IS REMOVED AFTER THE CONCRETE FORMS.
- B. **ARM SHALL BE CENTERED IN RECEIVER STANCHION WITH ± 1" CLEARANCE PERMITTED.**

TABULATION CHART

GATE OPENING	"A"	"B"	"C"	"D"	"E"	"F"	"G"	"H"
10 FOOT	10'-0"	15'-6"	17'-4 3/4"	15'-2 7/8"	21 11/16"	60 7/8"	16'-10"	152 7/8"
12 FOOT	12'-0"	17'-6"	19'-4 3/4"	17'-2 7/8"	21 11/16"	60 7/8"	18'-10"	176 7/8"



PROPRIETARY INFORMATION
This drawing is the property of Ameristar. It is not to be reproduced, copied, or distributed in any form without the written consent of Ameristar. Ameristar reserves the right to change the design of drawings, parts or items to improve them or to correct errors without notice. The user agrees to keep this information confidential.

REV.	DATE	DESCRIPTION

DESCRIPTION	RU	CHK BY	DATE
M550 ELECTRIC OPERABLE ARCHITECTURAL DETAILS 14FT - 16FT GENERAL LAYOUT - LH			04/06/2021

PROJECT NO.	SCALE	NTS

SHEET: 3

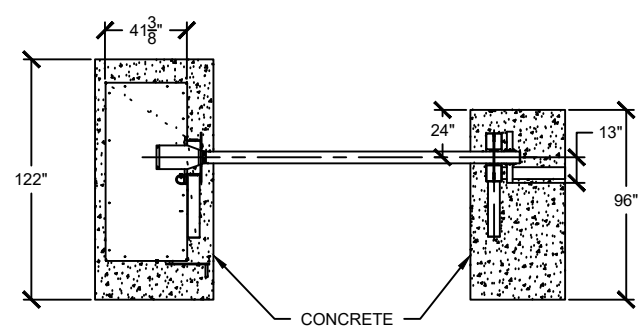
GENERAL NOTES:

- A. THE M550 IS INSTALLED WITH 1/4 INCH CLEARANCE UNDER THE HOUSING ASSEMBLY FOR DRAINAGE DURING RAINY CONDITIONS. IF APPROPRIATE, A DRAINAGE SYSTEM MAY BE USED TO CARRY AWAY RUNOFF IN FLOOD PRONE AREAS. THE BASE OF THE HOUSING ASSEMBLY HAS SEVEN HOLES, ONE IN THE CENTER AND SIX NEAR THE CORNERS. IF DRAIN PIPING IS UTILIZED IT IS RECOMMENDED TO PIPE ALL FIVE HOLES. HOWEVER, IF A SINGLE DRAIN PIPE IS TO BE USED UTILIZING A LEVEL, SELECT WHICH CORNER HOLE IS TO BE USED AS THE DRAIN. FOAM CAN BE APPLIED TO THE DRAIN HOLE DURING THE FOUNDATION PREPARATION PRIOR TO THE CONCRETE FORMING. FOAM IS REMOVED AFTER THE CONCRETE FORMS.
- B. **ARM SHALL BE CENTERED IN RECEIVER STANCHION WITH ± 1" CLEARANCE PERMITTED.**

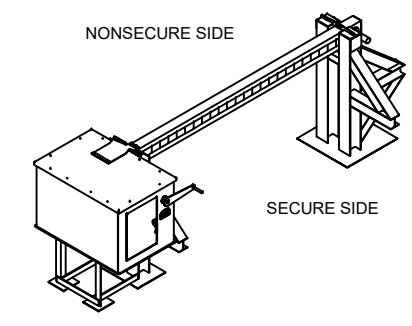
TABULATION CHART

GATE OPENING	"A"	"B"	"C"	"D"	"E"	"F"	"G"	"H"
14 FOOT	14'-0"	19'-6"	21'-4 3/4"	19'-2 7/8"	29 15/16"	72 7/8"	20'-10"	200 7/8"
16 FOOT	16'-0"	21'-6"	23'-4 3/4"	21'-2 7/8"	29 15/16"	72 7/8"	22'-10"	224 7/8"

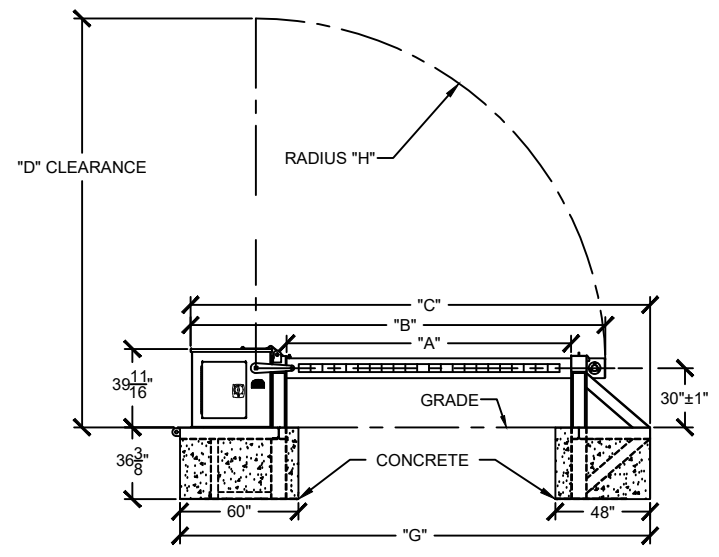
1 2 3 4 5



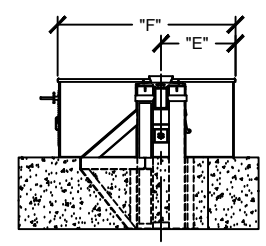
1 TOP VIEW
NTS



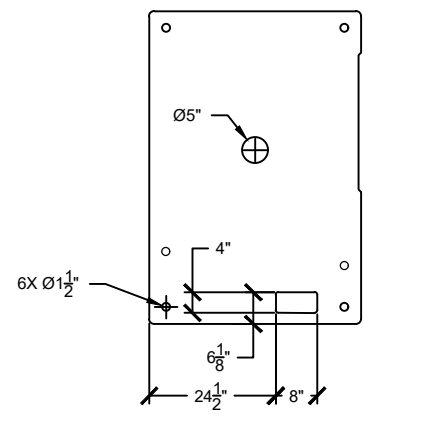
5 ISOMETRIC VIEW
NTS



2 FRONT VIEW
NTS



3 SIDE VIEW
NTS



4 CONDUIT STUB-UP & DRAIN
NTS

GENERAL NOTES:

- A. THE M550 IS INSTALLED WITH 1/4 INCH CLEARANCE UNDER THE HOUSING ASSEMBLY FOR DRAINAGE DURING RAINY CONDITIONS. IF APPROPRIATE, A DRAINAGE SYSTEM MAY BE USED TO CARRY AWAY RUNOFF IN FLOOD PRONE AREAS. THE BASE OF THE HOUSING ASSEMBLY HAS SEVEN HOLES, ONE IN THE CENTER AND SIX NEAR THE CORNERS. IF DRAIN PIPING IS UTILIZED IT IS RECOMMENDED TO PIPE ALL FIVE HOLES. HOWEVER, IF A SINGLE DRAIN PIPE IS TO BE USED UTILIZING A LEVEL, SELECT WHICH CORNER HOLE IS TO BE USED AS THE DRAIN. FOAM CAN BE APPLIED TO THE DRAIN HOLE DURING THE FOUNDATION PREPARATION PRIOR TO THE CONCRETE FORMING. FOAM IS REMOVED AFTER THE CONCRETE FORMS.
- B. **ARM SHALL BE CENTERED IN RECEIVER STANCHION WITH ± 1" CLEARANCE PERMITTED.**

TABULATION CHART

GATE OPENING	"A"	"B"	"C"	"D"	"E"	"F"	"G"	"H"
18 FOOT	18'-0"	23'-6"	25'-4 3/4"	23'-2 7/8"	37 11/16"	90 1/8"	25'-10"	248 7/8"
20 FOOT	20'-0"	25'-6"	27'-4 3/4"	25'-2 7/8"	37 11/16"	90 1/8"	27'-10"	272 7/8"



PROPRIETARY INFORMATION
This drawing is the property of Ameristar. It is to be used only for the project and location specified. No part of this drawing may be reproduced or transmitted in any form or by any means, electronic or mechanical, including photocopying, recording, or by any information storage and retrieval system, without the prior written permission of Ameristar.

REV.	DATE	DESCRIPTION

DESCRIPTION: M550 ELECTRIC OPERABLE ARCHITECTURAL DETAILS
18FT - 20FT GENERAL LAYOUT - LH

PROJECT NO.: - - -

DRAWN BY: RU
SCALE: NTS

CHK BY: - - -
DATE: 04/06/2021

SHEET: 5